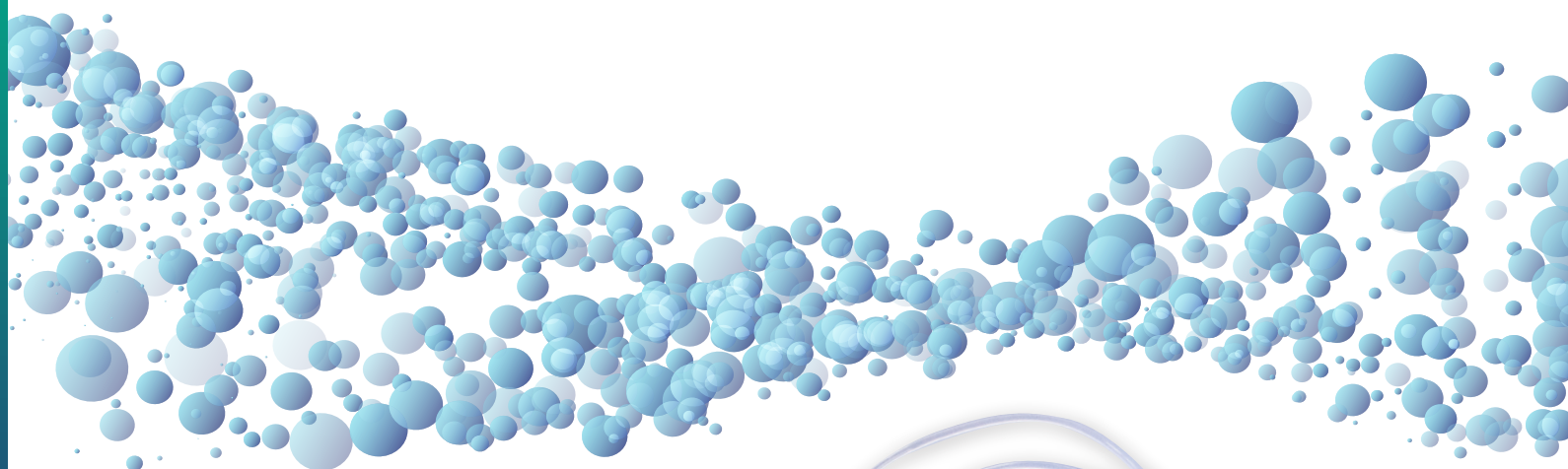


CELL CONNECT

The **CELL CONNECT** is intended to be used for fluid transfer.

OriGen
BIOMEDICAL



The Cell Connect is designed to streamline the addition of stem cells and freezing solution into up to four CryoStore™ freezing bags to prepare for cryopreservation.

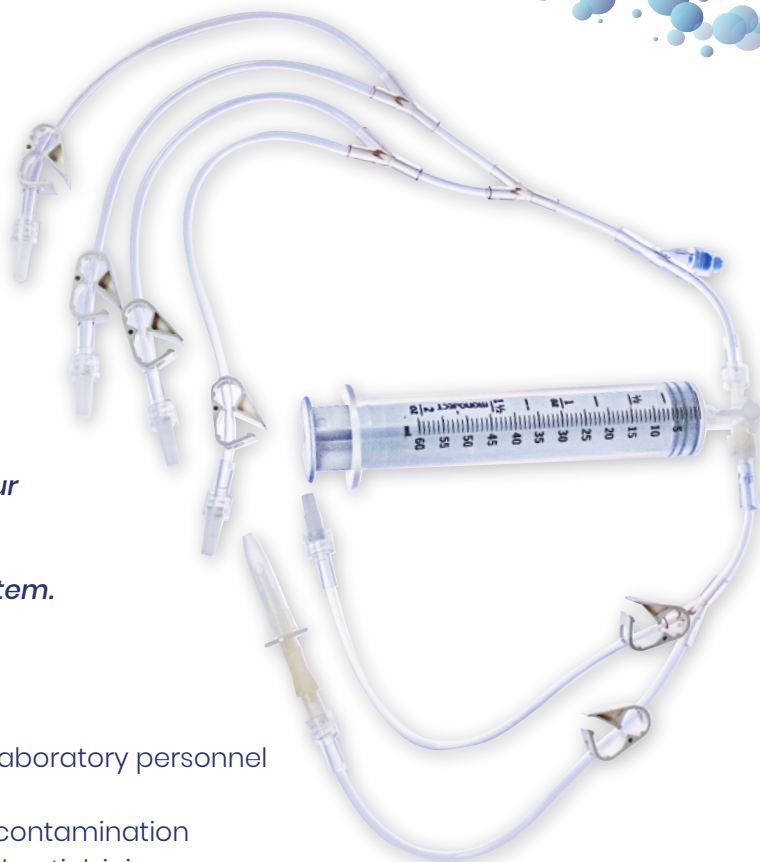
The Cell Connect provides the opportunity to either spike/luer connect or sterile-weld to both your stem cells and freezing media for transfer of products. Sterile-welding can potentially eliminate the need for a cleanroom by creating a closed-system.

CELL CONNECT BENEFITS:

- Efficiently make six connections
- Ease of use saves on the training time needed for laboratory personnel
- PVC tubing for sterile-welding
- Closed-system processing may reduce the risk of contamination
- Needle-free features reduce the potential for needle-stick injury

OUR QUALITY STANDARDS

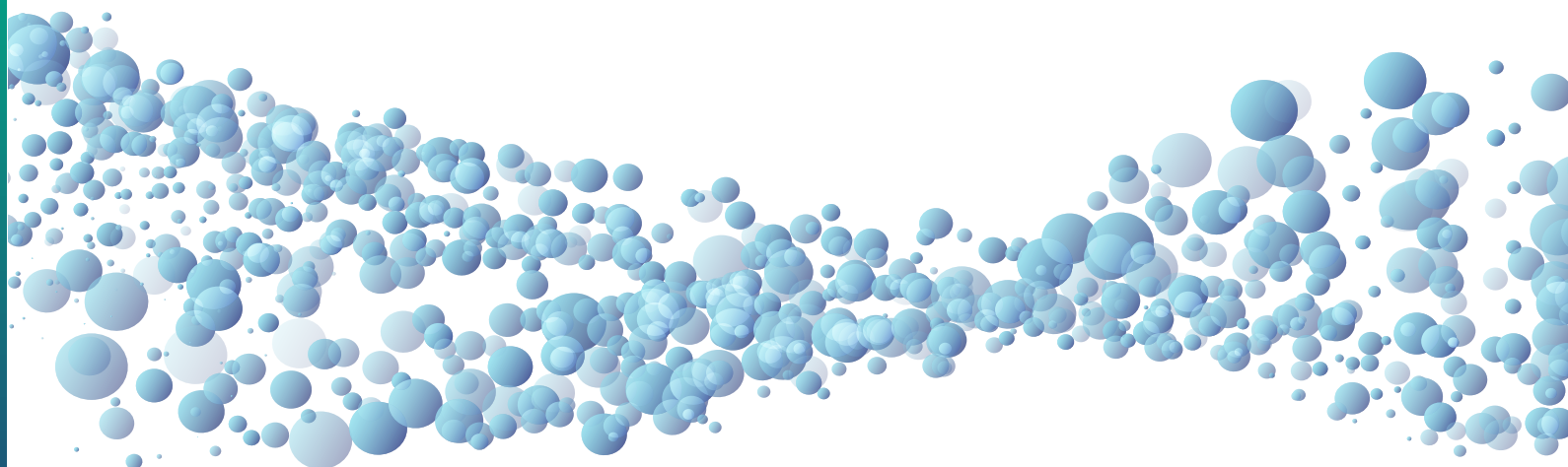
A Certificate of Conformance (CoC) is included with each Cell Connect product. OriGen's Accessory Sets are CE marked. OriGen is certified to ISO 13485:2016, MDSAP certified, and all products are manufactured to GMP guidelines.



CELL CONNECT

The **CELL CONNECT** is intended to be used for fluid transfer.

OriGen
BIOMEDICAL

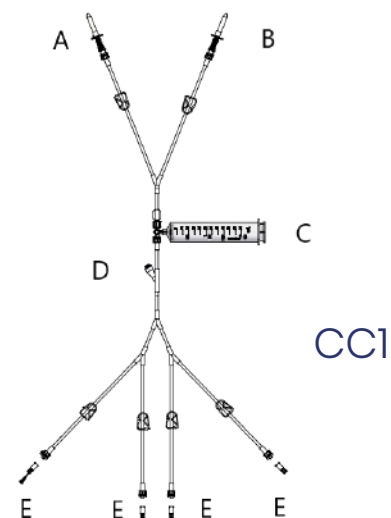


PART CODE	PRODUCT DESCRIPTION	CASE QUANTITY
CC1	Two spikes to a 3-way stopcock, 60ml syringe and needle-free valve to four male luers with 70cm SCD tubing and pinch clamps.	12
CC2	One spike and male luer to a 3-way stopcock, 60ml syringe and needle-free valve to four male luers with 70cm SCD tubing and pinch clamps.	12

Individually packed in Tyvek® pouch, supplied sterile, for single use only

EXAMPLE OF USE:

Close all pinch clamps. Attach cells to spike (A) and attach freeze media to spike (B). Attach up to four CryoStore™ freezing bags via male luers (E). Seal off any unused tubes to reduce cell loss. Open pinch clamps to the desired pathway, transfer cells and solutions.



7000 Burleson Rd, Bldg D | Austin, Texas 78744 | 512.474.7278 | Toll Free 800.233.9014 | sales.us@origen.com | origen.com

CE Marked | ISO 13485 Certified | MDSAP Certified | Manufactured to GMP Guidelines

ML05.02.R04: 2021-02